

## INSTALLATION INSTRUCTIONS

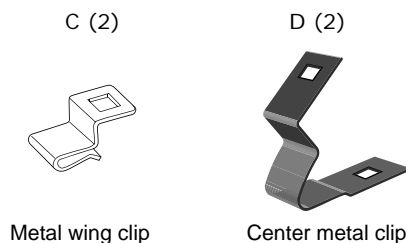
**1. DESCRIPTION:** Hood Protector

**2. APPLICATION:** Infiniti EX35

**3. PART NUMBER:** 999D5 5U000

**4. KIT CONTENTS:**

Item No.	Qty	Description
A	1	Hood protector
B	4	Large abrasive resistant tape
C	2	Metal wing clip
D	2	Center metal clip
E	4	Small screw
F	4	Washer
G	4	Nut insert
H	2	Self drilling screw
I	2	Screw plug
J	1	Alcohol wipe
K	2	Small abrasive resistant tape



**5. TOOLS REQUIRED:**

- Non-permanent soft-tipped Pen or Pencil
- 6mm drill bit
- Rust inhibitor (999MP-9G001P)
- Clean rag
- Center punch

**6. PRE-INSTALLATION CAUTIONS / NOTES:**

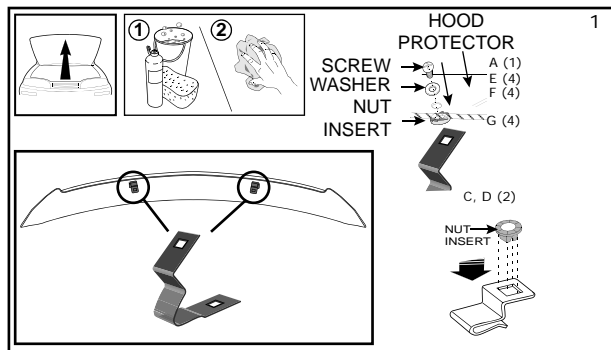
- Clean Hood protector with mild soap and water using a soft cloth or chamois.
- Do not over tighten screws.

### ⚠ CAUTION

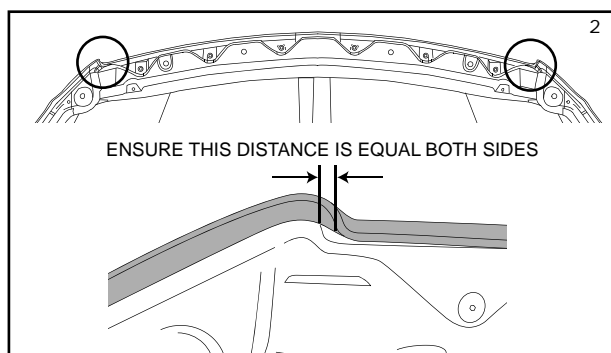
- Before securing the hood protector, ensure that the part is centralized with hood.
- Failure to ensure that the clip rests on the abrasive resistant tape may result in permanent paint damage.
- Failure to set a drill stop of 5mm may result in permanent hood damage.

# INSTALLATION INSTRUCTIONS - Hood Protector Kit

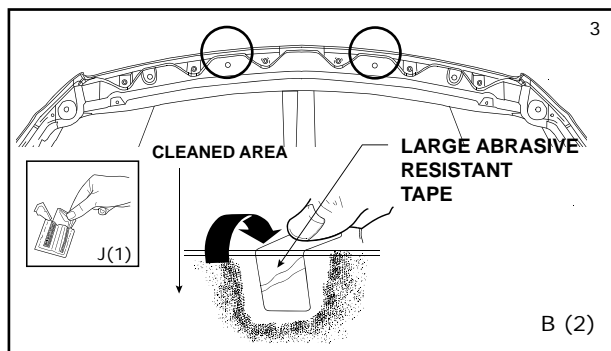
## 7. INSTALLATION PROCEDURE:



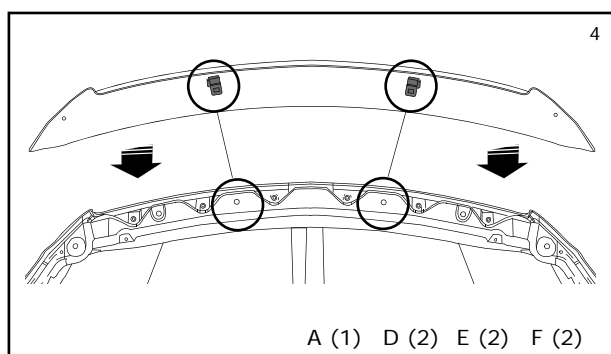
1. Clean installation area thoroughly and open the hood. Position the nut inserts into the center metal clips and metal wing clips, as shown. Secure **center** metal clips to hood protector with a small screws and washers. Center screws on part covering slots.



2. Trial fit hood protector on hood. Align the hood protector in the center of the hood by ensuring the distance between the edge of the hood and hood protector is equal on both sides (in the area shown). Mark location where the abrasive resistant tape should be applied (two center locations).

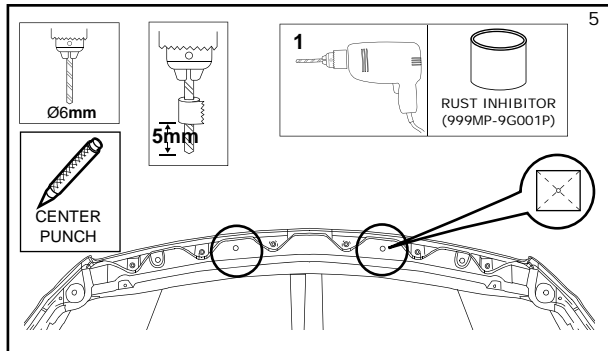


3. Clean center metal clips locations with alcohol wipe provided. Wipe off any residue with a dry clean cloth. Adhere the large abrasive resistant tape strips over the hood lip. Apply tape so approximately half of each strip is adhered to the topside and half is adhered to the underside of hood.



4. Re-fit hood protector to hood. Apply masking tape to hood underneath the square holes in the center metal clips. Mark the outline of the square hole onto the masking tape. Remove the hood protector.

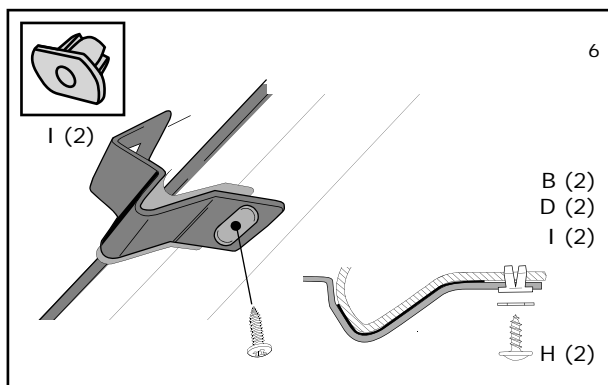
# INSTALLATION INSTRUCTIONS - Hood Protector Kit



- Find the center of the square hole on the masking tape by joining the corners of the square (see image). Center punch then drill Ø6mm holes at the center of the square holes. Remove any metal shavings and remove masking tape from hood. Apply rust inhibitor (999MP-9G001P) around the raw edges of the drilled holes.

## CAUTION

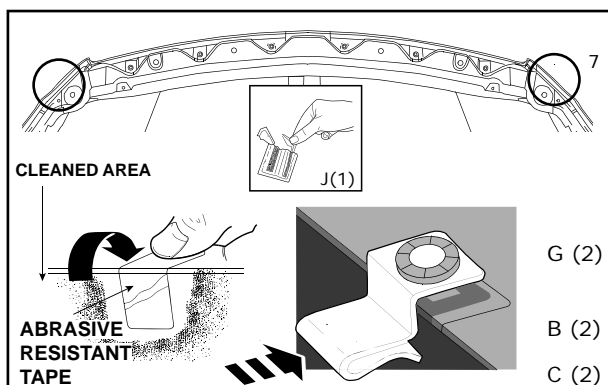
- Be sure to set a drill stop of 5mm. The drill should not penetrate the hood more than 5mm



- Re-fit the hood protector centrally to hood. Secure the hood protector with center metal clips to hood screw plug and self drilling screws provided. **Note:** Ensure the clips fit tightly against the hood lip. If necessary detach the hood protector from the clips and re-align clips tightly to hood.

## CAUTION

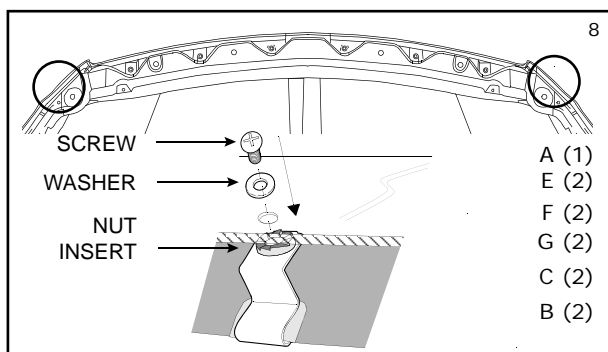
- Failure to ensure that the clip rests on the abrasive resistant tape may result in permanent paint damage.
- Make sure screw plug does not rotate out of the square hole in the center metal clip.



- Clean the noted areas under the wing clip locations with alcohol wipe provided. Wipe off any residue with a dry clean cloth. Adhere the abrasive resistant tape strips over the hood lip. Apply tape so approximately half of each strip is adhered to the topside and half is adhered to the underside of hood. Locate the outer metal wing clips over the abrasive resistant tape strips on the hood lip.

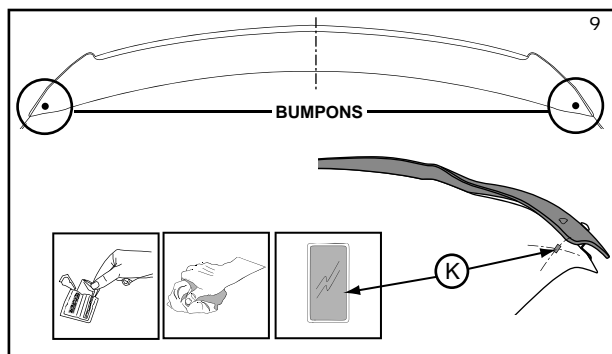
## CAUTION

- Failure to ensure that the clip rests on the abrasive resistant tape may result in permanent paint damage.



- Secure the hood protector to the metal wing clips with the small screws and washers provided.  
**TO REMOVE:** Reverse the above procedure.

## INSTALLATION INSTRUCTIONS - Hood Protector Kit



9. Clean the two bumpon areas (bumpon positions) with alcohol wipe provided. Adhere the small abrasive resistant tape strips over hood lip. Apply small abrasive resistant tape to the top surface of hood directly under where bumpers are installed on product.

### **⚠ CAUTION**

- Check and ensure bumpers contacts abrasive resistant tape and not the hood surface. Failure to do so may result in vehicle paint damage.